

Executive Lighting Solutions, LLC

Designs & Plans

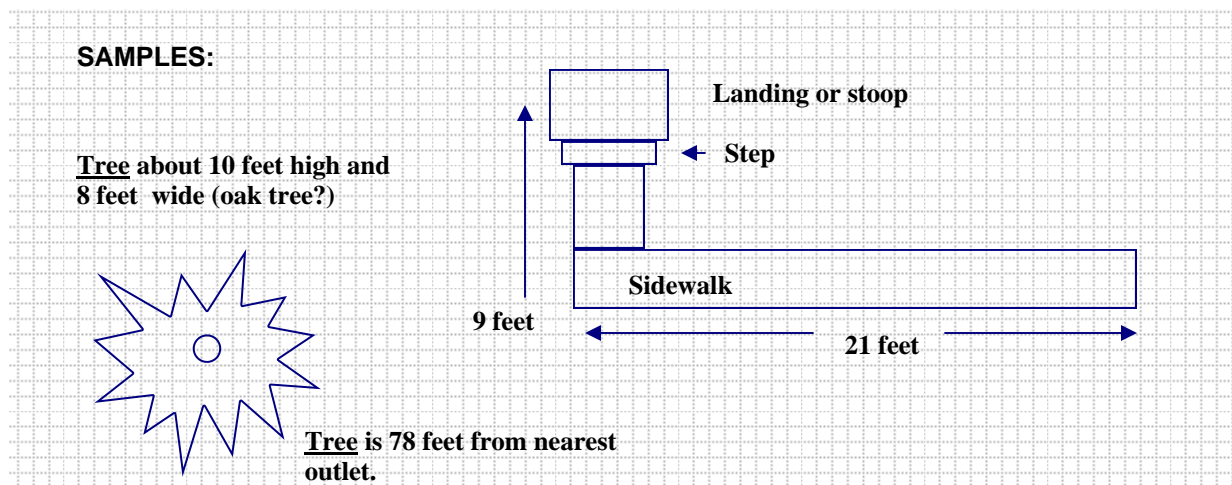


The following pages are for you to draw on. This will help us in understanding your surroundings and features in the areas you want lit at night. Some of these plans will work better than others. We have taken basic foot prints from common house designs and created general plans. If your house is different than any of these prints then try and use a blank sheet to draw the basic foot print of your home. These plans are not to scale and we aren't looking for these to be exact representations of your home. We will use these prints along with photos sent in deciding what will work best for your home.

What we are looking for is information. For example: Front yard closest power source, sidewalk measurement (if your interested in path lighting), front porch?, column/pillars?, tree locations?, retaining walls or any obstructions when running wire. Back yard: closest power source, patio areas, deck areas, pool area, tree locations, water features, flower beds, gazebos, trellis or any areas or feature you want to enjoy into the night time hours.

When drawing on these plans try and give us measurements and distances from the closest power source. Measurements of sidewalks, patio areas for path lights. For objects like trees we need to know the size and type of tree. Is the tree 8 feet high and 5 feet wide or 25 feet tall and 15 feet wide? These don't have to be exact. We just need to know what's in your surroundings so we can advise on how best to light an area.

Drawing symbols: when drawing objects just use basic shapes like squares and rectangles for decks, patios, and sidewalks. For trees and planting draw a circle with a rough out line and write "tree" or "bush" by it. Do the best you can and remember this information is so we have a better understanding of what types of objects and surroundings you have around your home.



Following pages:

4 thru 17 Front and back yards

18 thru 22 Back yards

Executive Lighting Solutions, LLC

Designs & Plans



Fax cover sheet

Executive Lighting Solutions Information:
Fax: (763) 559-9506

Your Name _____

Address _____

Phone _____

Fax _____

Email _____

Drawing

Drawing Revised

Number of pages

Comments:

Executive Lighting Solutions, LLC

Designs & Plans



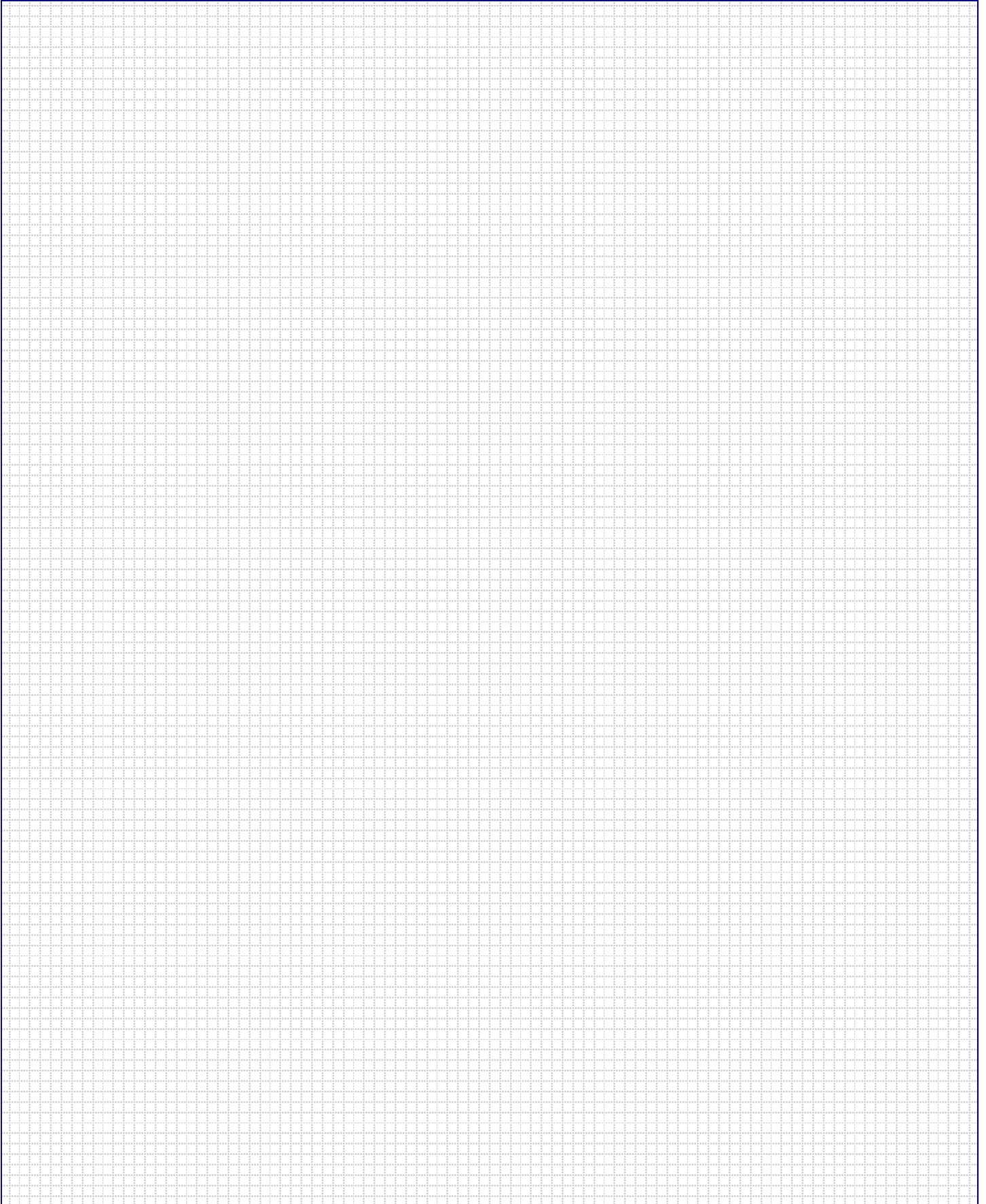
Measurements & information

(Sample)

Sidewalk (patio) _____

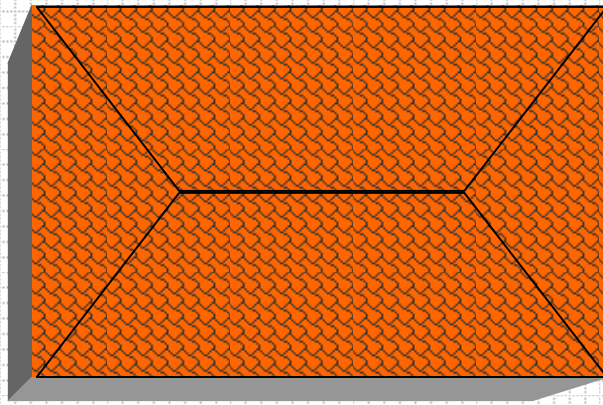
Comments:

This is a blank work sheet. If your home is unique and the other house foot prints don't work then try and draw what the outline of your home looks like. This doesn't have to be exact.



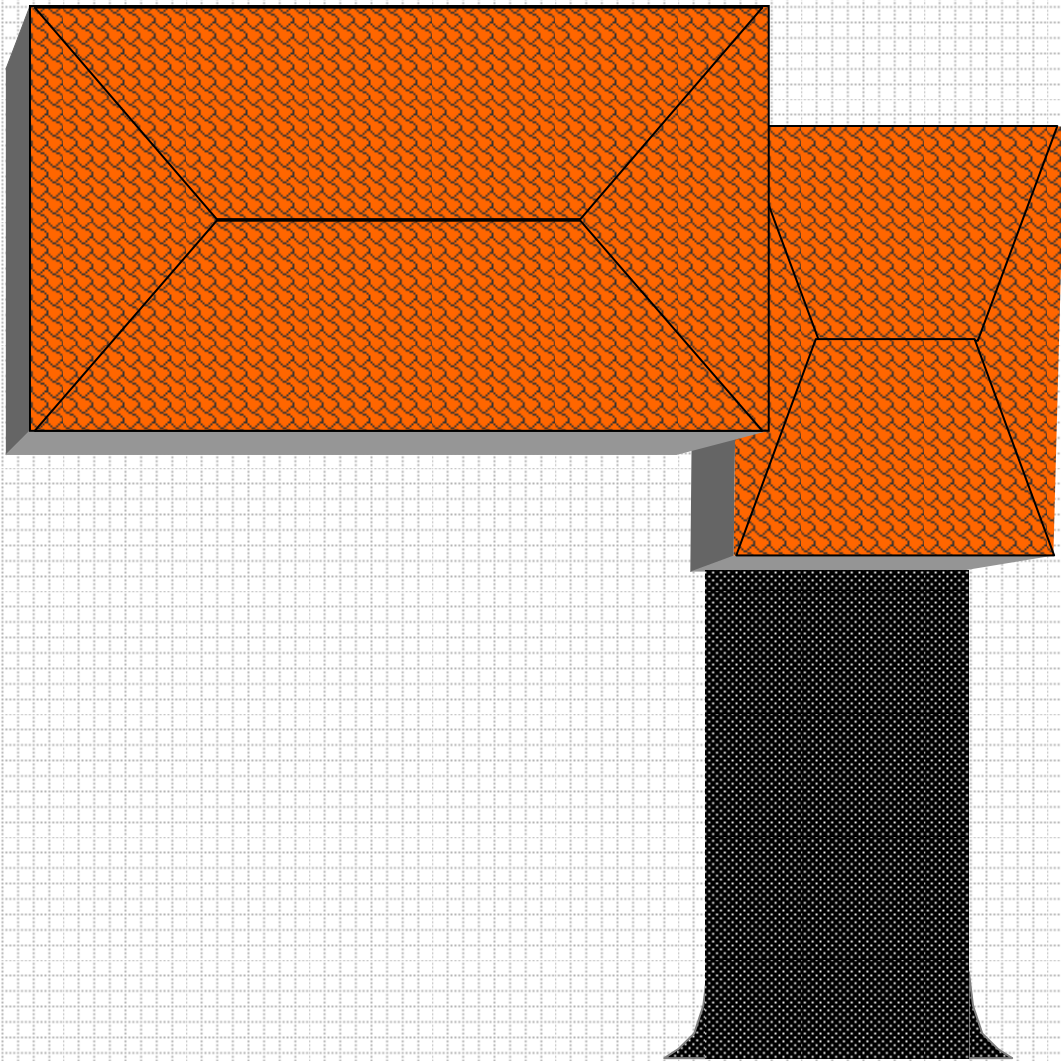
You may want to print more than one copy. This way you can use one for scratch paper.

This is the most basic of house plans. Draw in the garage, sidewalk, trees, driveway, porch, deck, patio, pool, water features or anything that is relative to the area you want lighting.

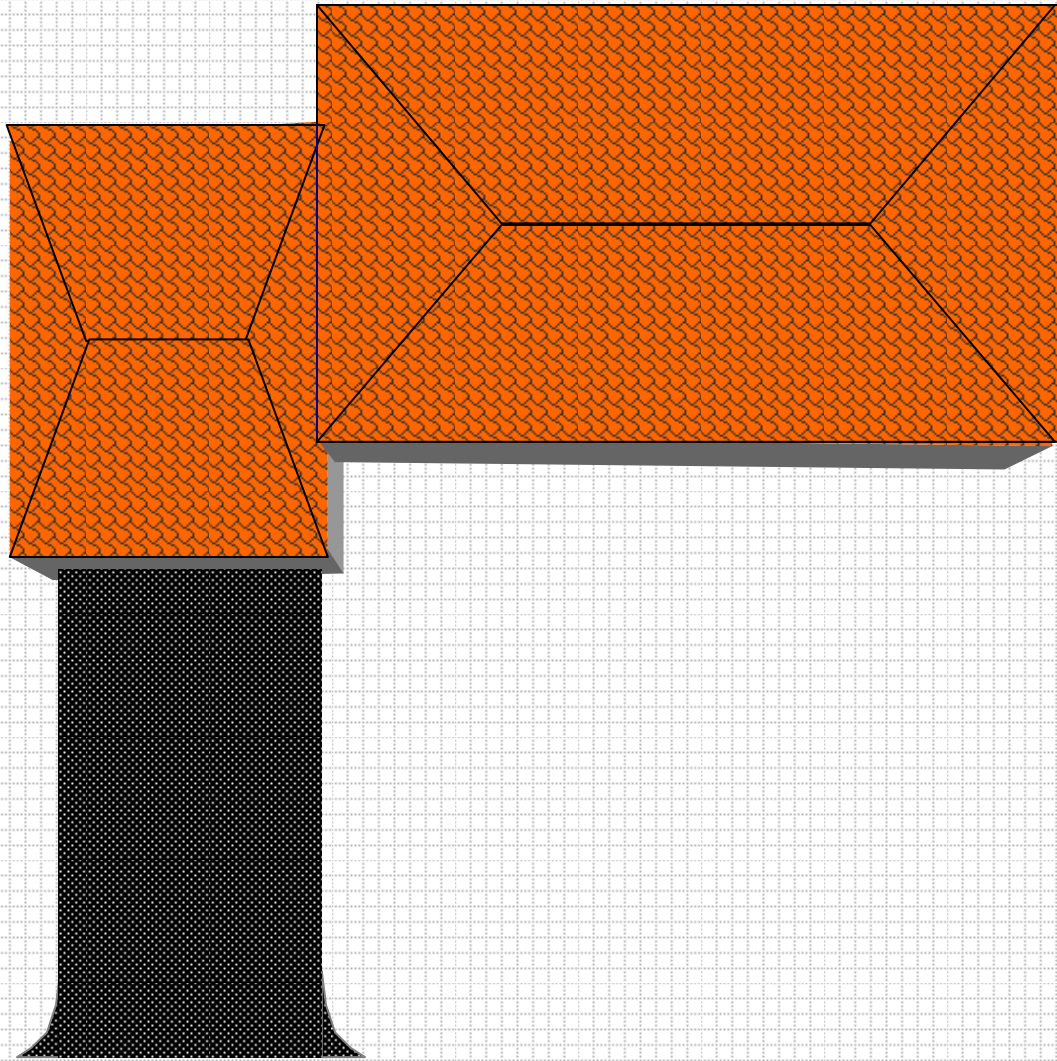


You may want to print more than one copy. This way you can use one for scratch paper.

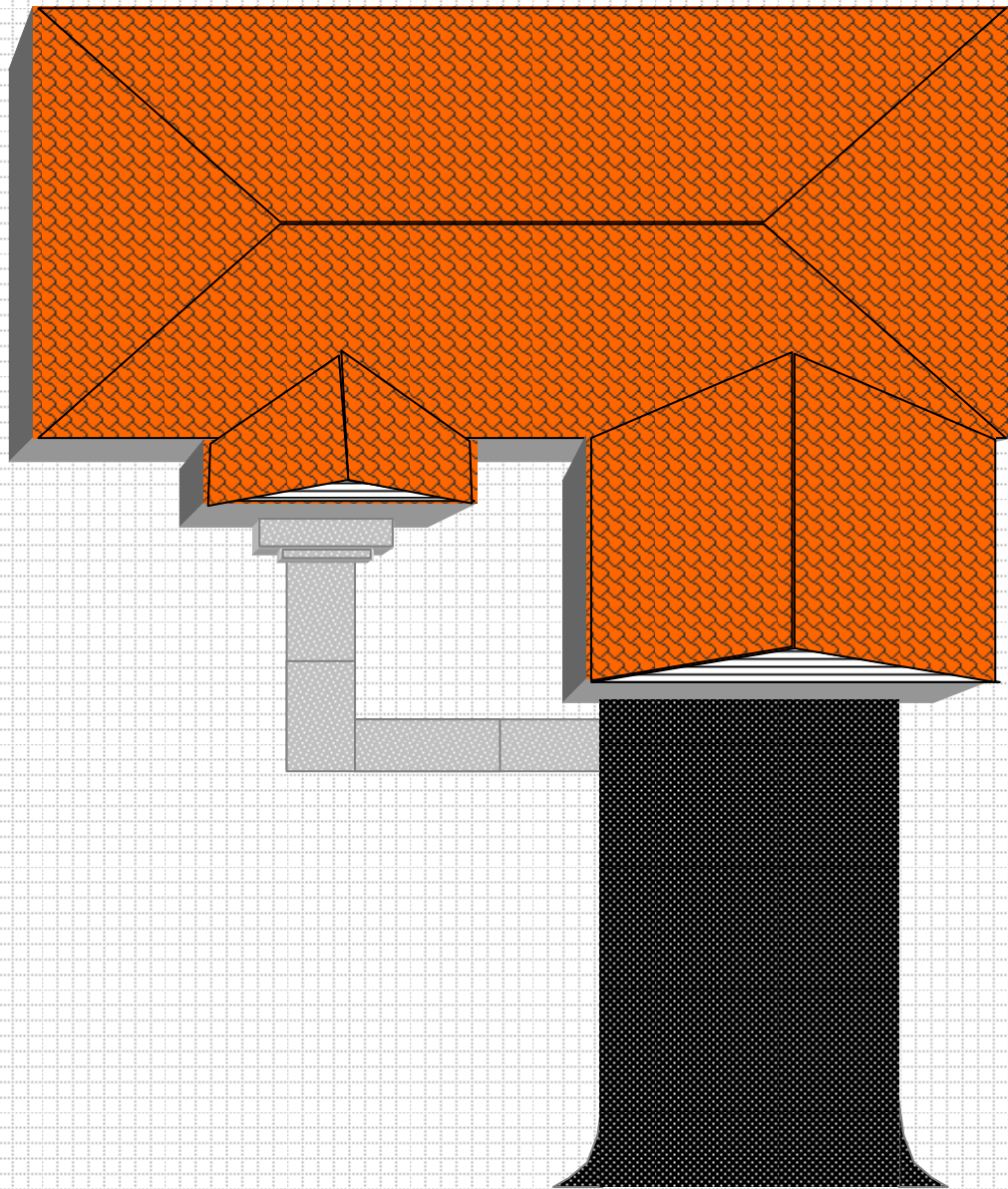
Draw in what ever is relative to your house. (right side driveway)



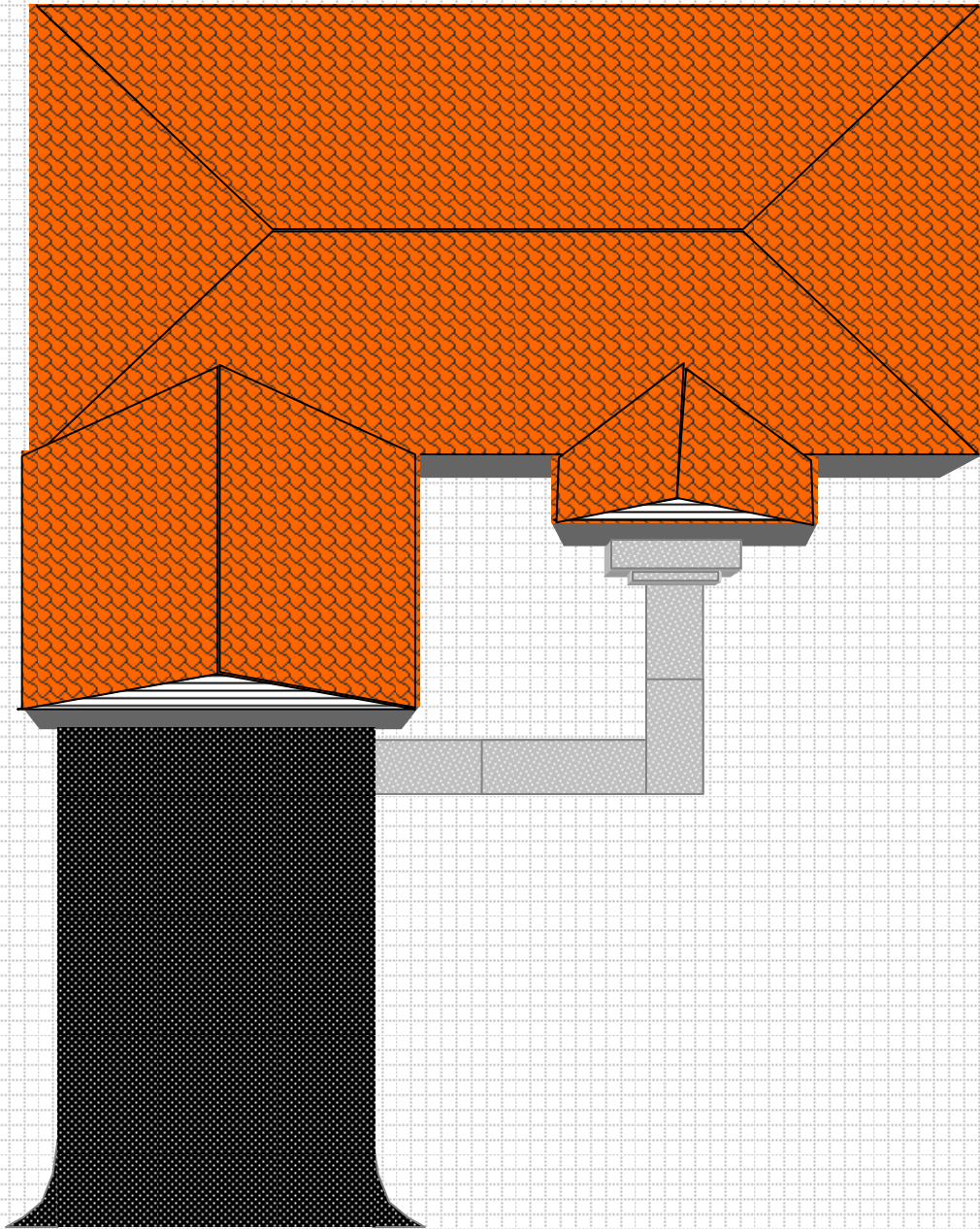
Draw in what ever is relative to your house. (left side driveway)



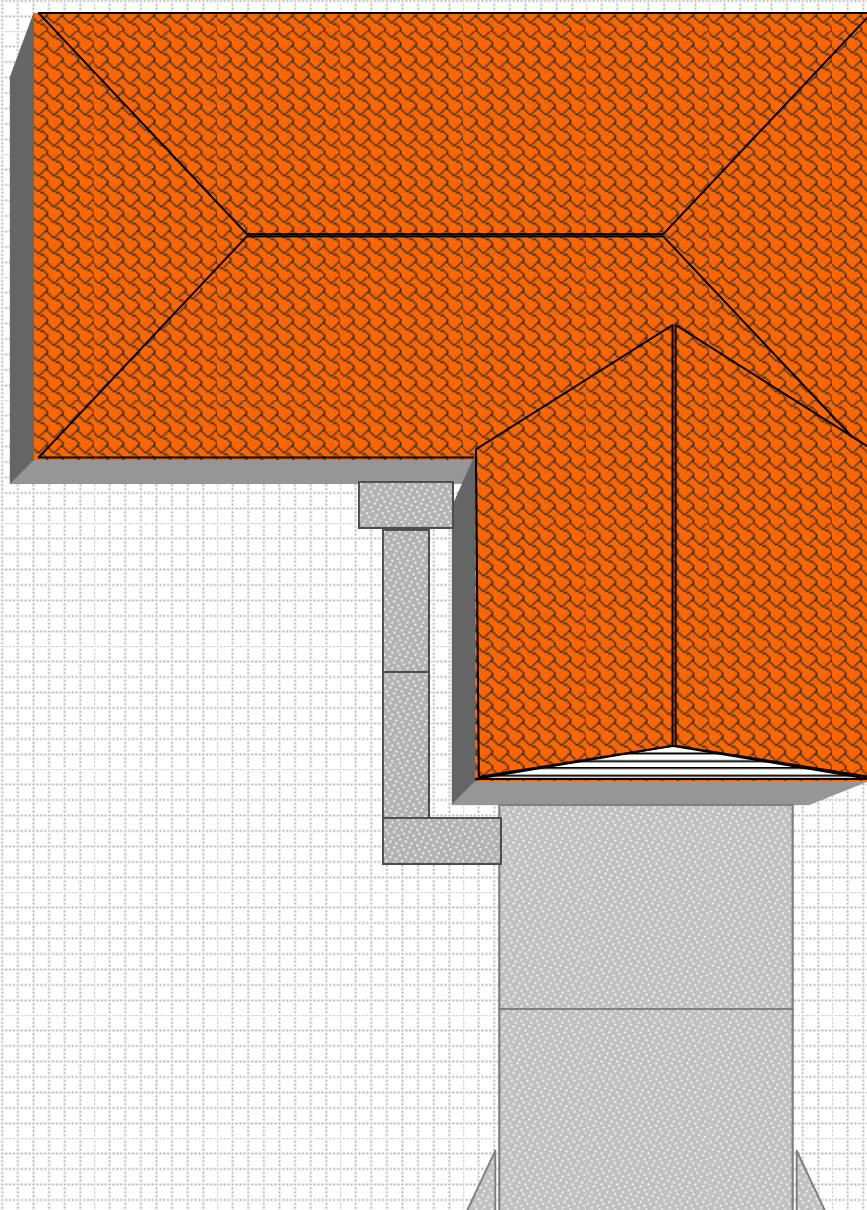
Draw in what ever is relative to your house. (right side driveway)



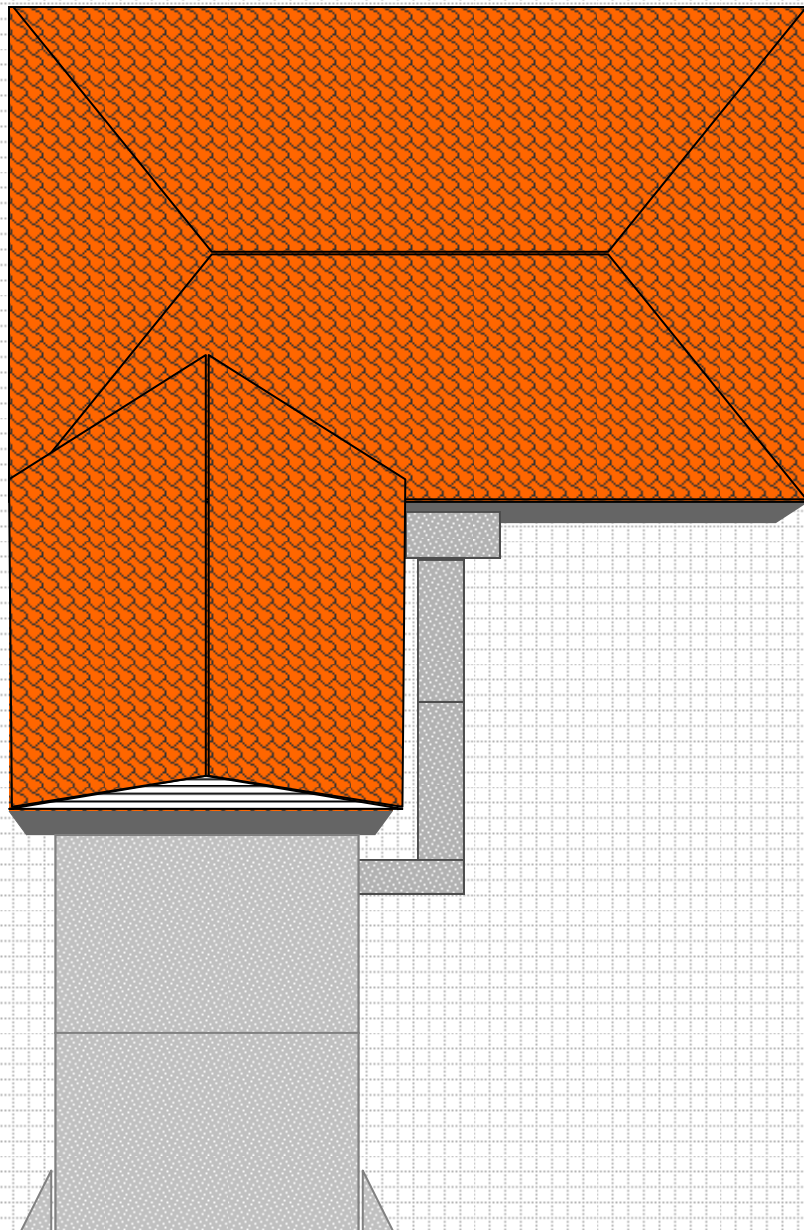
Draw in what ever is relative to your house. (left side drive way)



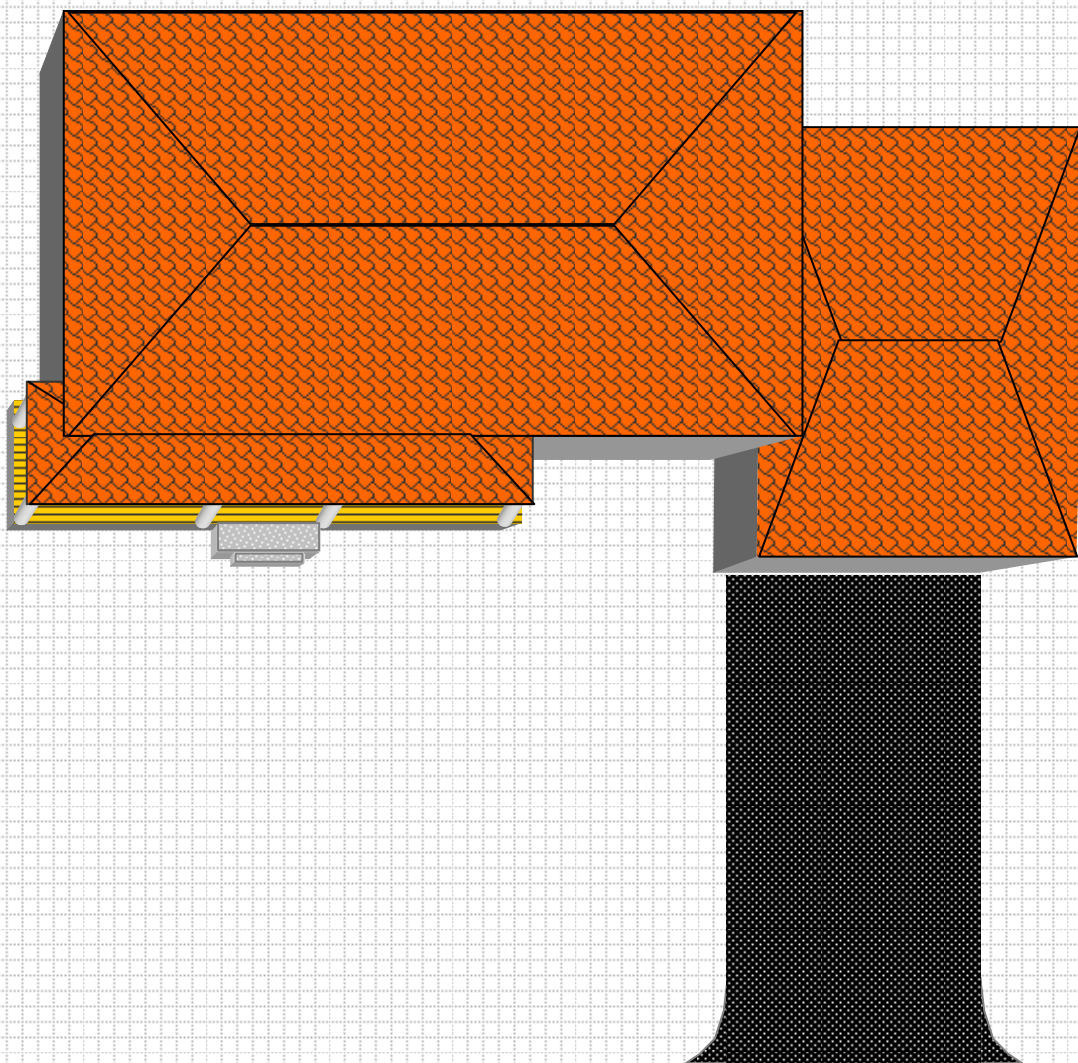
Draw in what ever is relative to you house. (right side drive way)



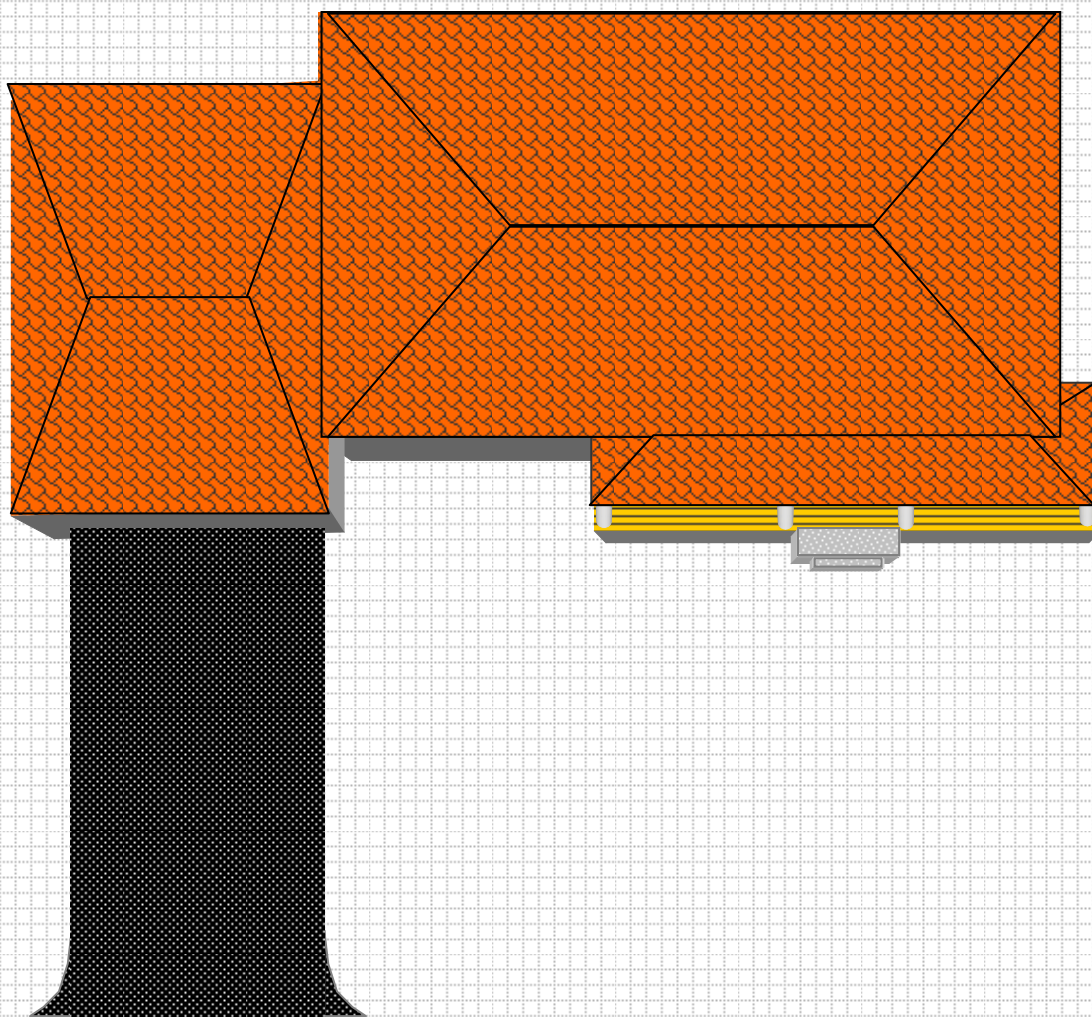
Draw in what ever is relative to your house. (left side drive way)



Draw in what ever is relative to your house. Front porch (right side drive way)



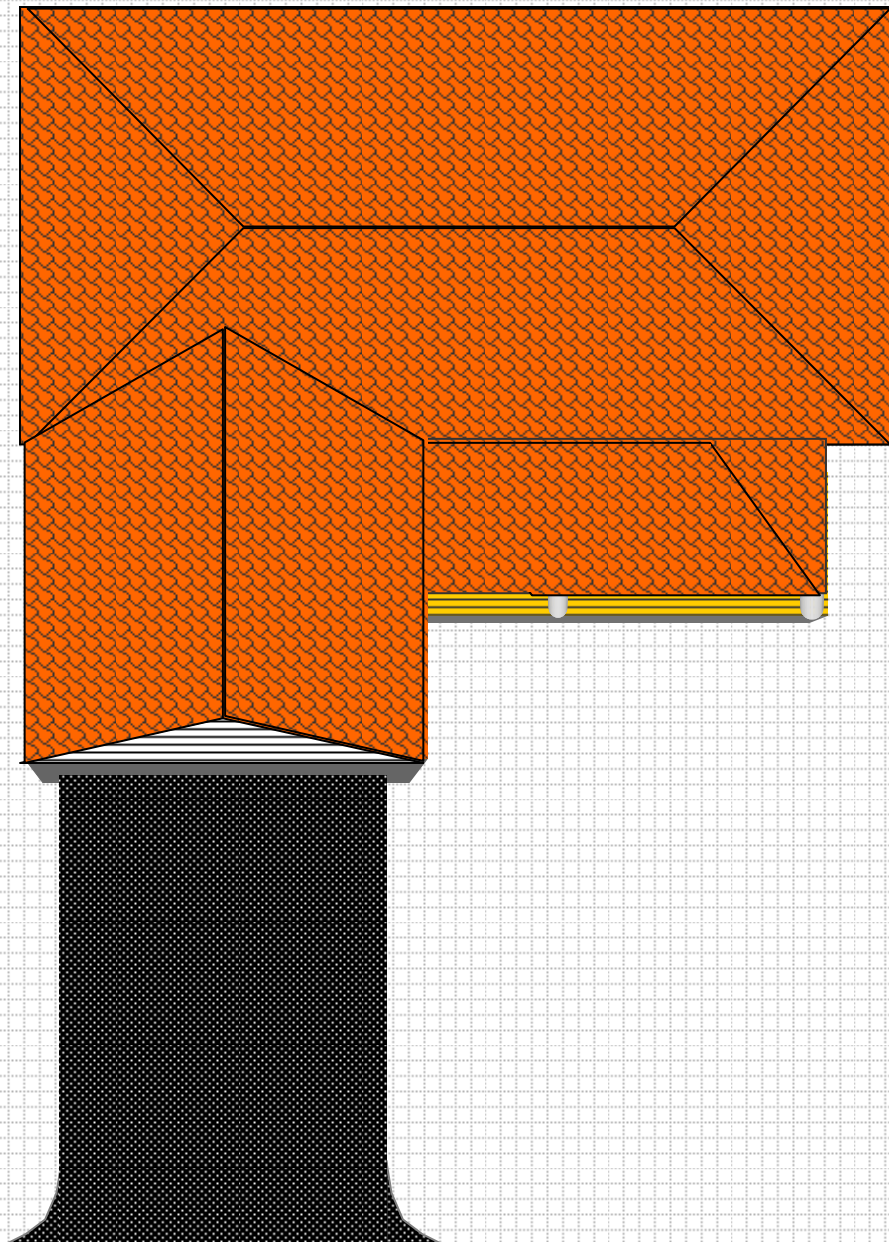
Draw in what ever is relative to your house. Front porch (left side drive way)



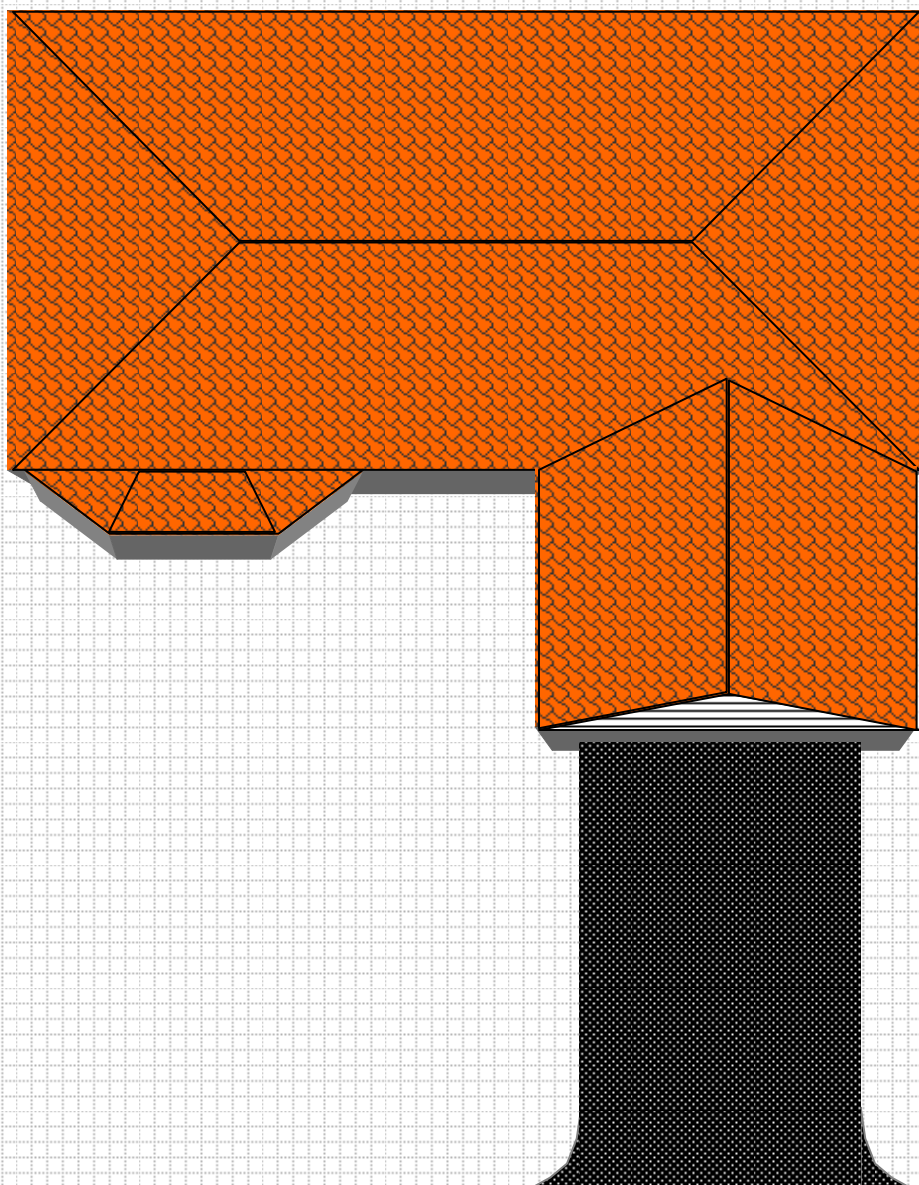
Draw in what ever is relative to your house. Front porch (left side drive way)



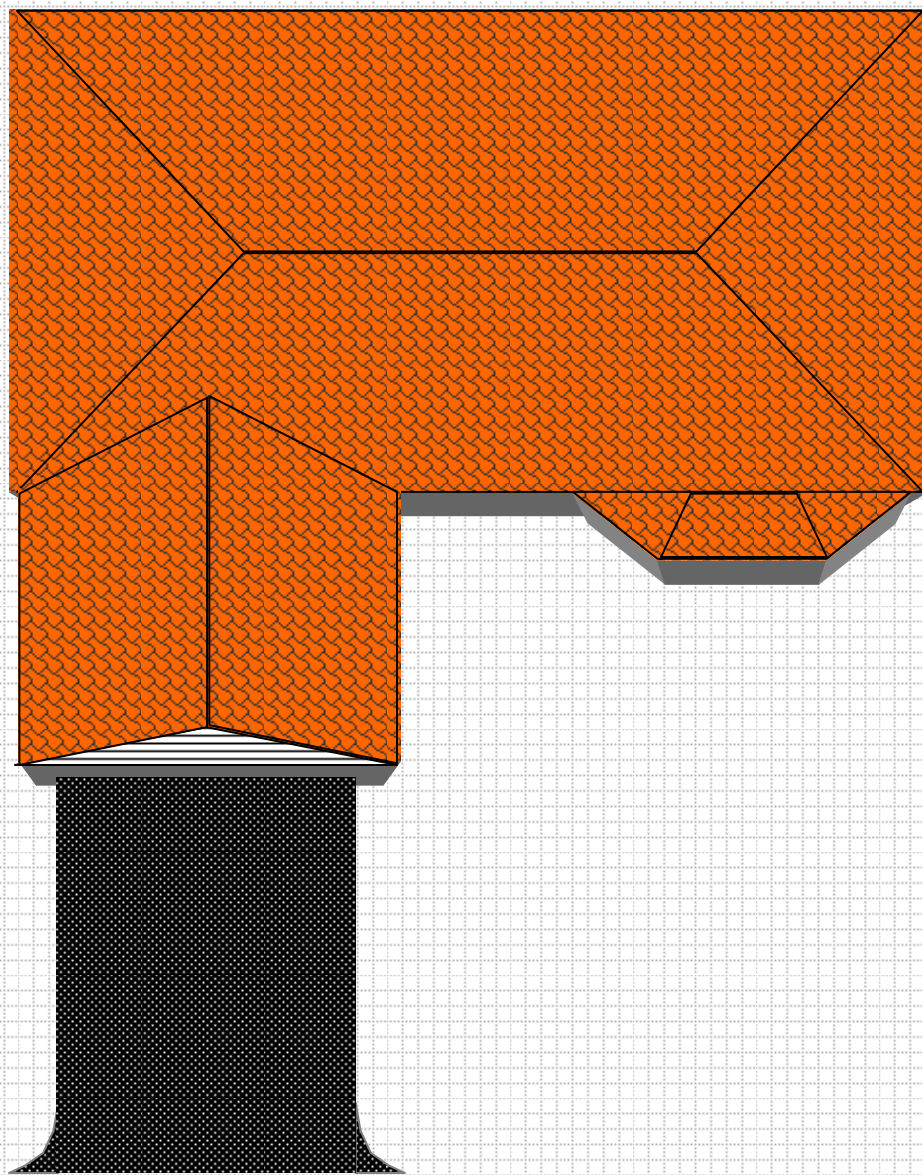
Draw in what ever is relative to your house. Front porch (left side drive way)



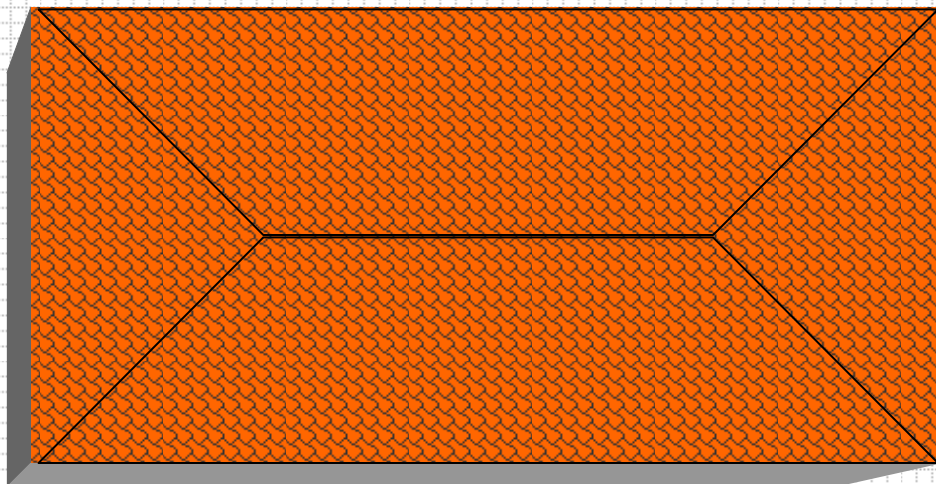
Draw in what ever is relative to your house. (right side drive way)



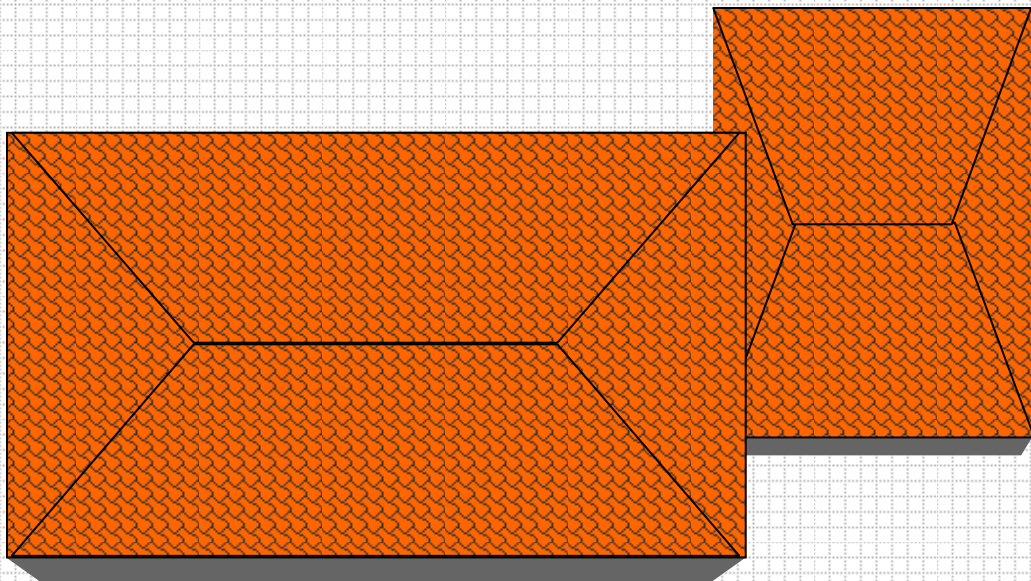
Draw in what ever is relative to your house. (left side drive way)



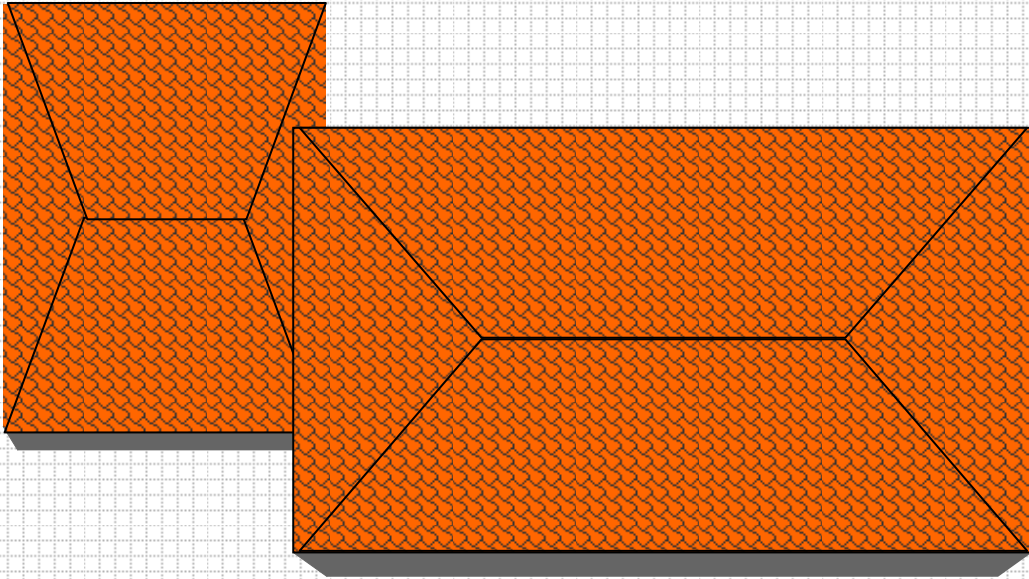
Draw in what ever is relative to your house. Back yard (basic)



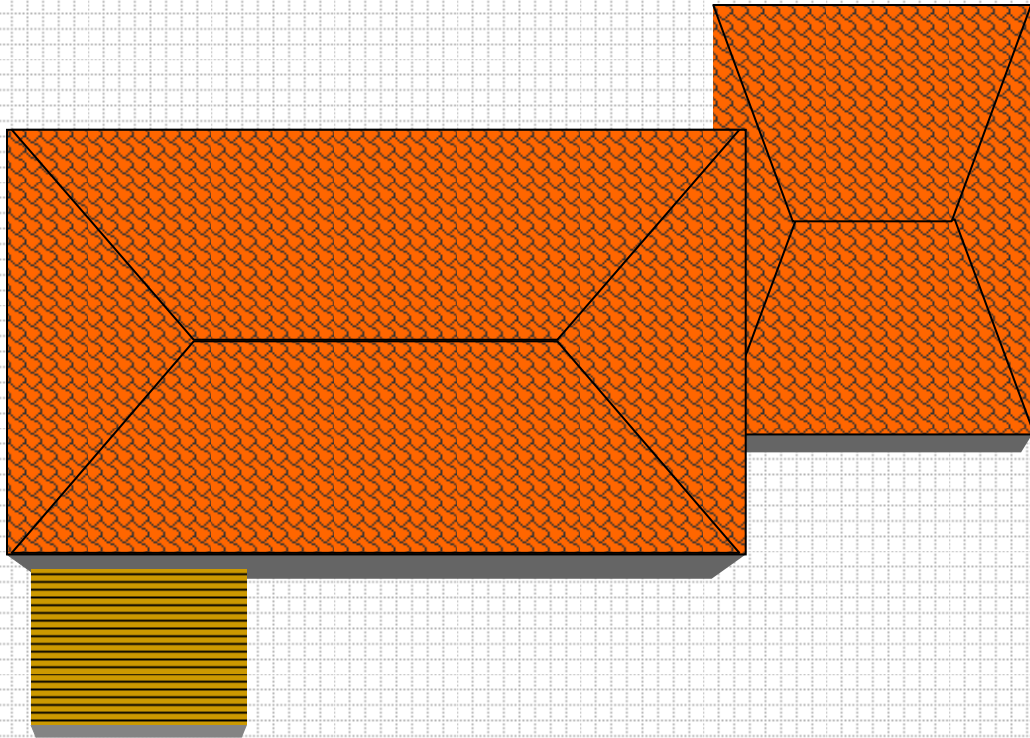
Draw in what ever is relative to your house. Back yard



Draw in what ever is relative to your house. Back yard



Draw in what ever is relative to your house. Back yard w/deck



Draw in what ever is relative to your house. Back yard w/deck

